

Recombinant Human CD3E & CD3G Protein, Fc-tagged

Cat. No. CD3E & CD3G-145H **Lot. No.** (See product label)

SPECIFICATION

Product Overview	Human CD3 epsilon & CD3 gamma Heterodimer Protein is expressed from mammalian with a Fc Tag at the C-terminal. It contains Asp 23 - Asp 126 (CD3E) & Gln 23 - Ser 116 (CD3G).
Species	Human
Source	HEK293
ProteinLength	Asp 23 - Asp 126 (CD3E) & Gln 23 - Ser 116 (CD3G)
Description	T-cell surface glycoprotein CD3 epsilon & CD3 gamma chain, also known as CD3E & CD3G , are single-pass type I membrane proteins. When antigen presenting cells (APCs) activate T-cell receptor (TCR), TCR-mediated signals are transmitted across the cell membrane by the CD3 chains CD3D, CD3E, CD3G and CD3Z. All CD3 chains contain immunoreceptor tyrosine-based activation motifs (ITAMs) in their cytoplasmic domain.
Form	Supplied as 0.22um filtered solution in PBS (pH 7.4).
Endotoxin	Less than 0.01 EU per ug by the LAL method.
Purity	> 95% as determined by Bis-Tris PAGE. > 95% as determined by HPLC.
Storage	The product should be stored at -70°C. Please do not repeated freeze-thaw cycles.

 Tel: 1-631-559-9269 1-516-512-3133

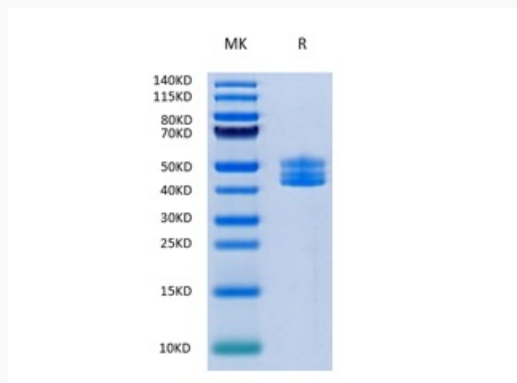
 Email: info@creative-biomart.com  Fax: 1-631-938-8127

 45-1 Ramsey Road, Shirley, NY 11967, USA

GENE INFORMATION

Gene Name	CD3E CD3e molecule [Homo sapiens (human)]
Official Symbol	CD3E & CD3G
Synonyms	CD3E; CD3G
Gene ID	916
mRNA Refseq	NM_000733.4
Protein Refseq	NP_000724.1
MIM	186830
UniProt ID	P07766

**Tris-Bis PAGE of
CD3E & CD3G-145H**

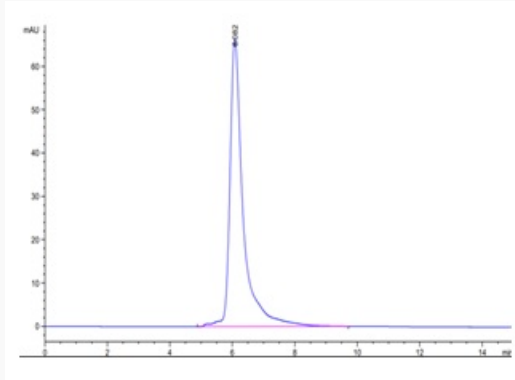


 Tel: 1-631-559-9269 1-516-512-3133

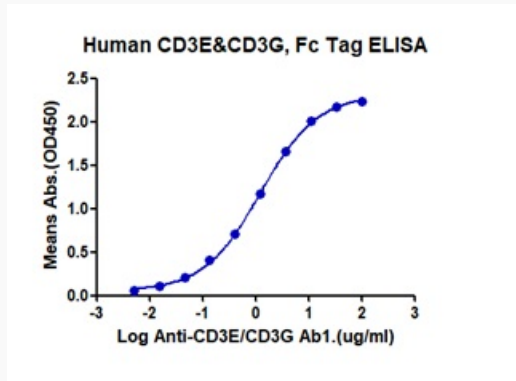
 Email: info@creative-biomart.com  Fax: 1-631-938-8127

 45-1 Ramsey Road, Shirley, NY 11967, USA

**SEC-HPLC of CD3E
& CD3G-145H**



**ELISA of CD3E &
CD3G-145H**



 Tel: 1-631-559-9269 1-516-512-3133

 Email: info@creative-biomart.com  Fax: 1-631-938-8127

 45-1 Ramsey Road, Shirley, NY 11967, USA